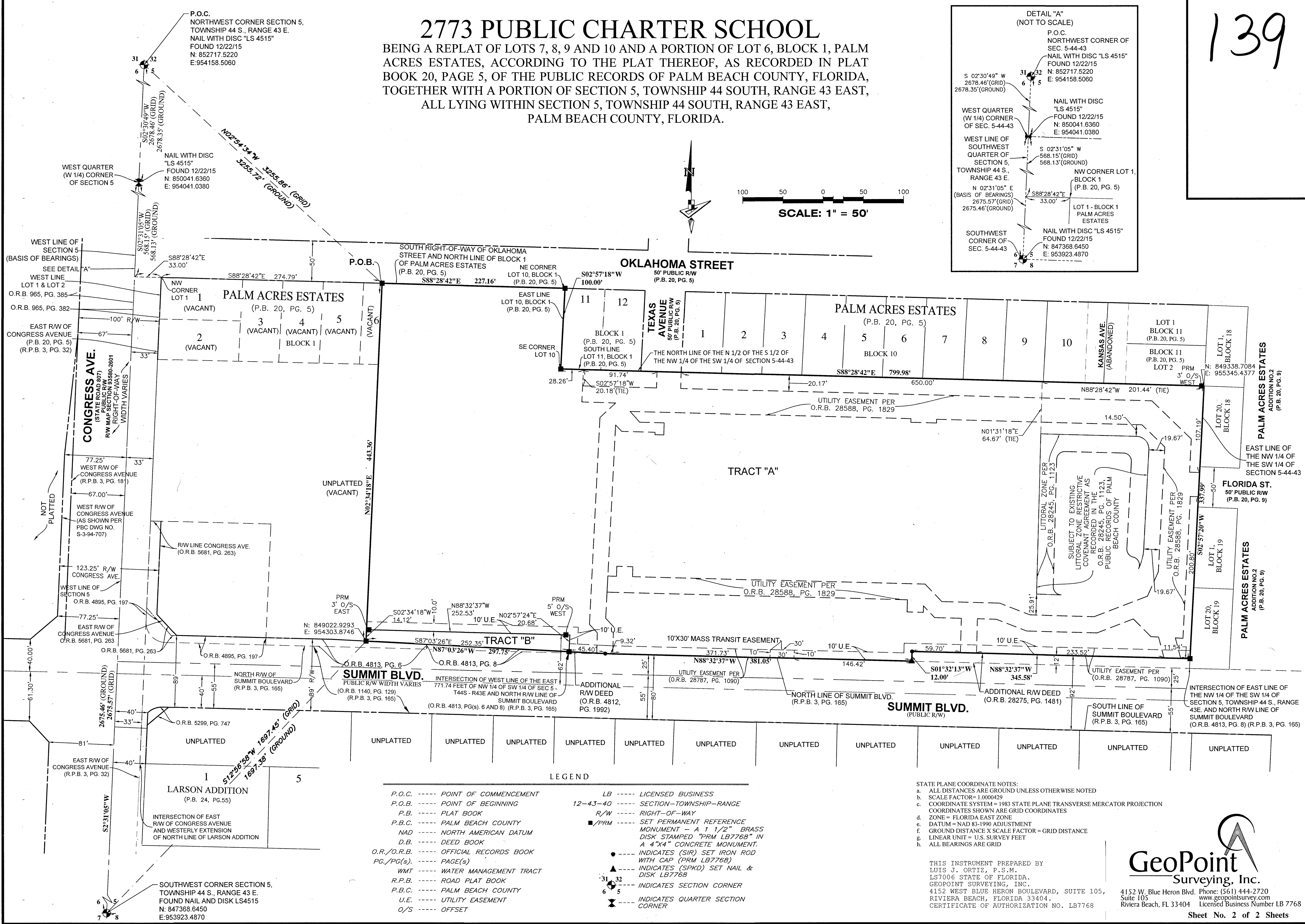
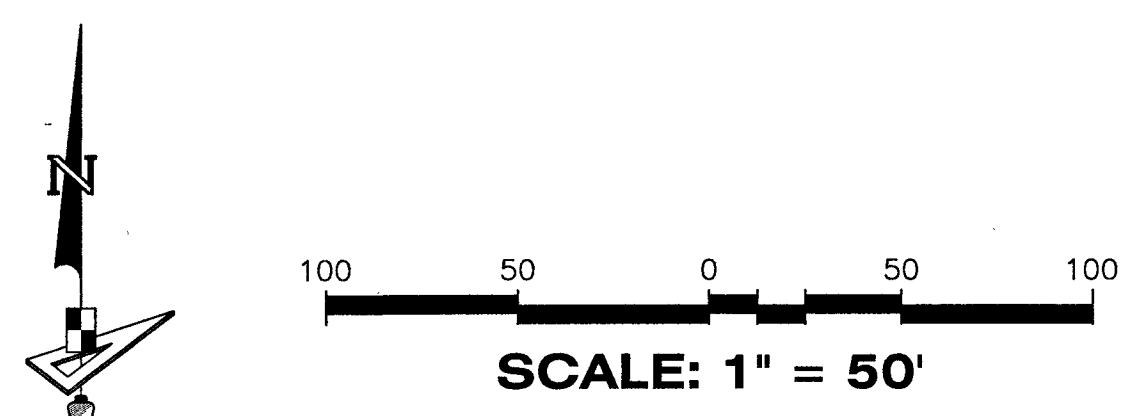
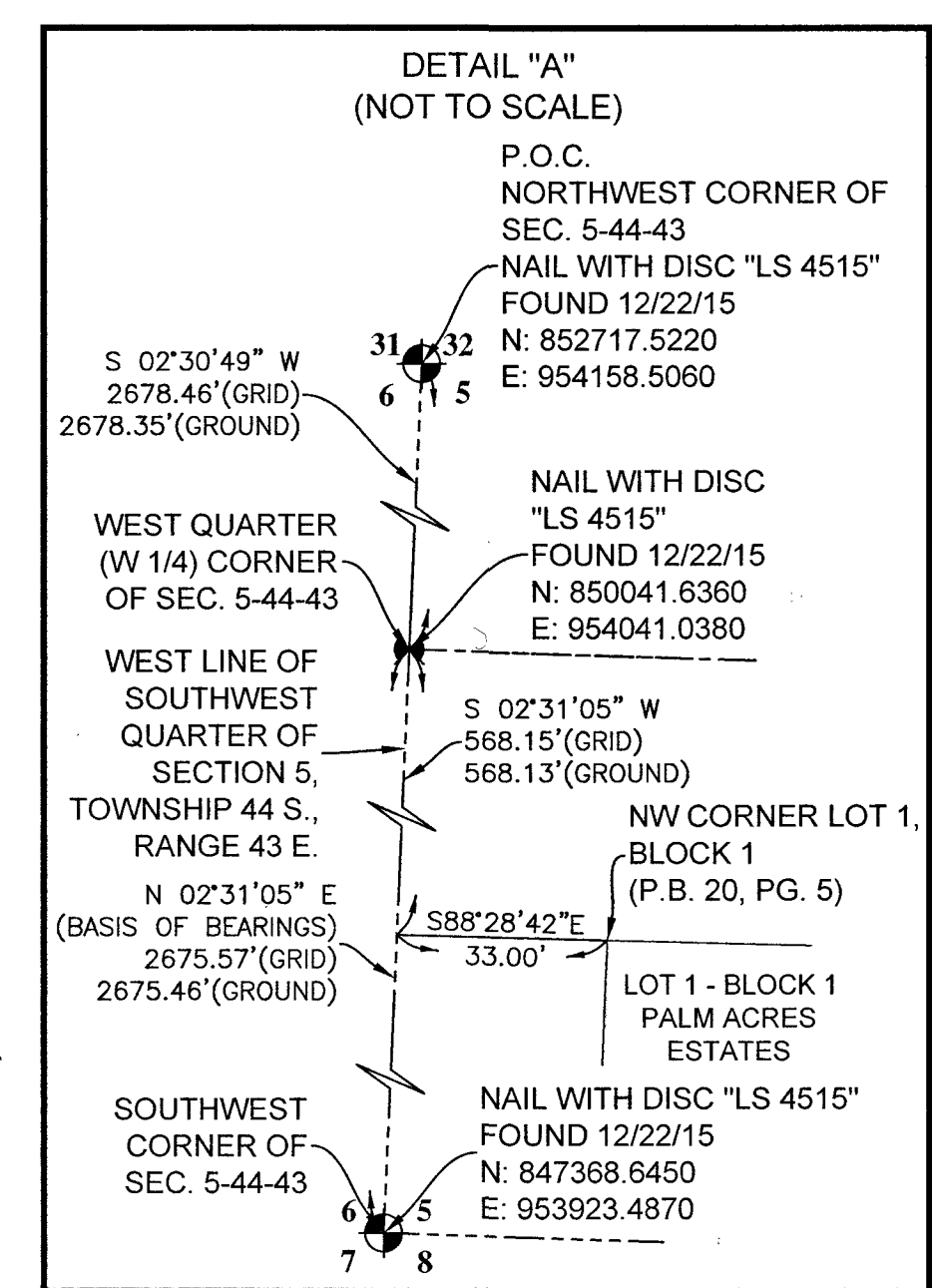


139

2773 PUBLIC CHARTER SCHOOL

BEING A REPLAT OF LOTS 7, 8, 9 AND 10 AND A PORTION OF LOT 6, BLOCK 1, PALM ACRES ESTATES, ACCORDING TO THE PLAT THEREOF, AS RECORDED IN PLAT BOOK 20, PAGE 5, OF THE PUBLIC RECORDS OF PALM BEACH COUNTY, FLORIDA, TOGETHER WITH A PORTION OF SECTION 5, TOWNSHIP 44 SOUTH, RANGE 43 EAST, ALL LYING WITHIN SECTION 5, TOWNSHIP 44 SOUTH, RANGE 43 EAST, PALM BEACH COUNTY, FLORIDA.



- LEGEND**
- P.O.C. ----- POINT OF COMMENCEMENT
 - P.O.B. ----- POINT OF BEGINNING
 - P.B. ----- PLAT BOOK
 - P.B.C. ----- PALM BEACH COUNTY
 - NAD ----- NORTH AMERICAN DATUM
 - D.B. ----- DEED BOOK
 - O.R./O.R.B. ----- OFFICIAL RECORDS BOOK
 - PG./PG(S). ----- PAGE(S)
 - WMT ----- WATER MANAGEMENT TRACT
 - R.P.B. ----- ROAD PLAT BOOK
 - P.B.C. ----- PALM BEACH COUNTY
 - U.E. ----- UTILITY EASEMENT
 - O/S ----- OFFSET
 - LB ----- LICENSED BUSINESS
 - 12-43-40 ----- SECTION-TOWNSHIP-RANGE
 - R/W ----- RIGHT-OF-WAY
 - /PRM ----- SET PERMANENT REFERENCE MONUMENT - A 1 1/2" BRASS DISK STAMPED "PRM LB7768" IN A 4"x4" CONCRETE MONUMENT.
 - ----- INDICATES (SIR) SET IRON ROD WITH CAP (PRM LB7768)
 - ▲ ----- INDICATES (SPKD) SET NAIL & DISK LB7768
 - ⊙ ----- INDICATES SECTION CORNER
 - ⊗ ----- INDICATES QUARTER SECTION CORNER

STATE PLANE COORDINATE NOTES:

- ALL DISTANCES ARE GROUND UNLESS OTHERWISE NOTED
- SCALE FACTOR= 1.0000429
- COORDINATE SYSTEM = 1983 STATE PLANE TRANSVERSE MERCATOR PROJECTION COORDINATES SHOWN ARE GRID COORDINATES
- ZONE = FLORIDA EAST ZONE
- DATUM = NAD 83-1990 ADJUSTMENT
- GROUND DISTANCE X SCALE FACTOR = GRID DISTANCE
- LINEAR UNIT = U.S. SURVEY FEET
- ALL BEARINGS ARE GRID

THIS INSTRUMENT PREPARED BY
 LUIS J. ORTIZ, P.S.M.
 LS7006 STATE OF FLORIDA.
 GEOPPOINT SURVEYING, INC.
 4152 WEST BLUE HERON BOULEVARD, SUITE 105,
 RIVIERA BEACH, FLORIDA 33404.
 CERTIFICATE OF AUTHORIZATION NO. LB7768

GeoPoint
Surveying, Inc.

4152 W. Blue Heron Blvd. Phone: (561) 444-2720
 Suite 105 www.geopointsurvey.com
 Riviera Beach, FL 33404 Licensed Business Number LB 7768

Sheet No. 2 of 2 Sheets